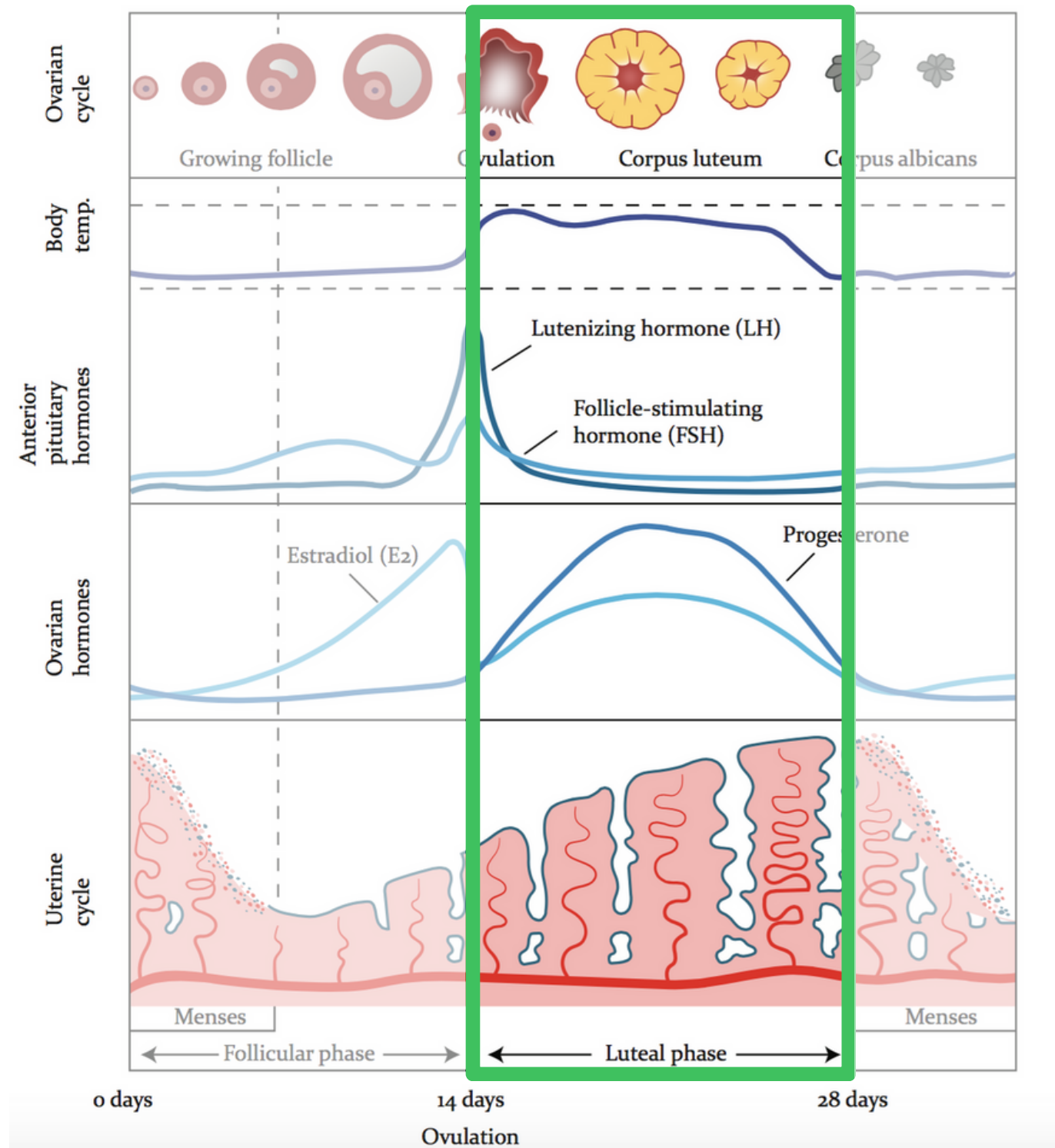


Luteal Phase Deficiencies



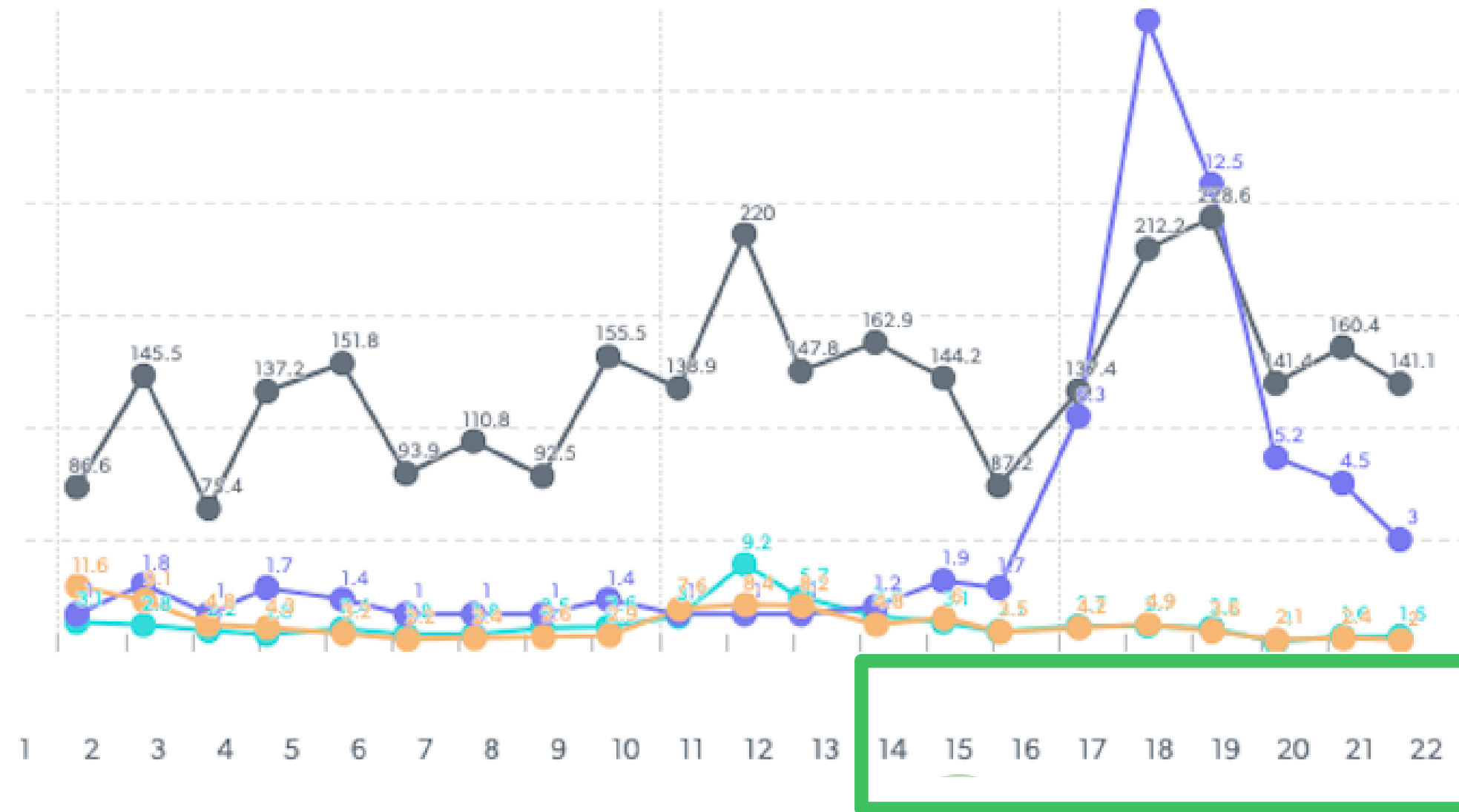
Inadequate corpus luteum progesterone production

Delayed, abnormal or poor response of the secretory endometrial development

Reproductive consequences:

- Failed implantation
- Premature luteal-placental shift
- Subfertility
- Early pregnancy loss

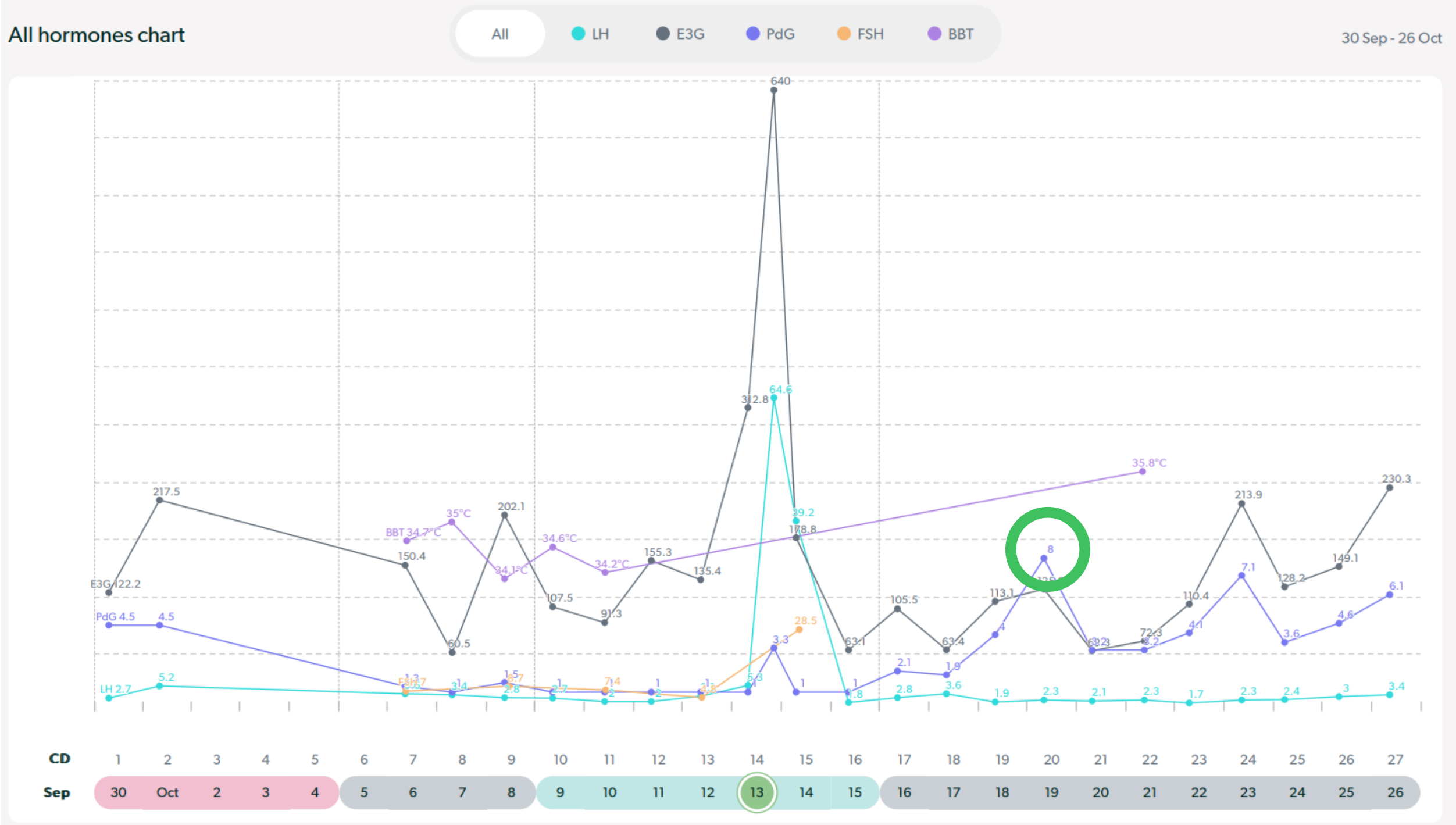
Luteal phase insufficiency: short luteal phase



Luteal phase is 9 days



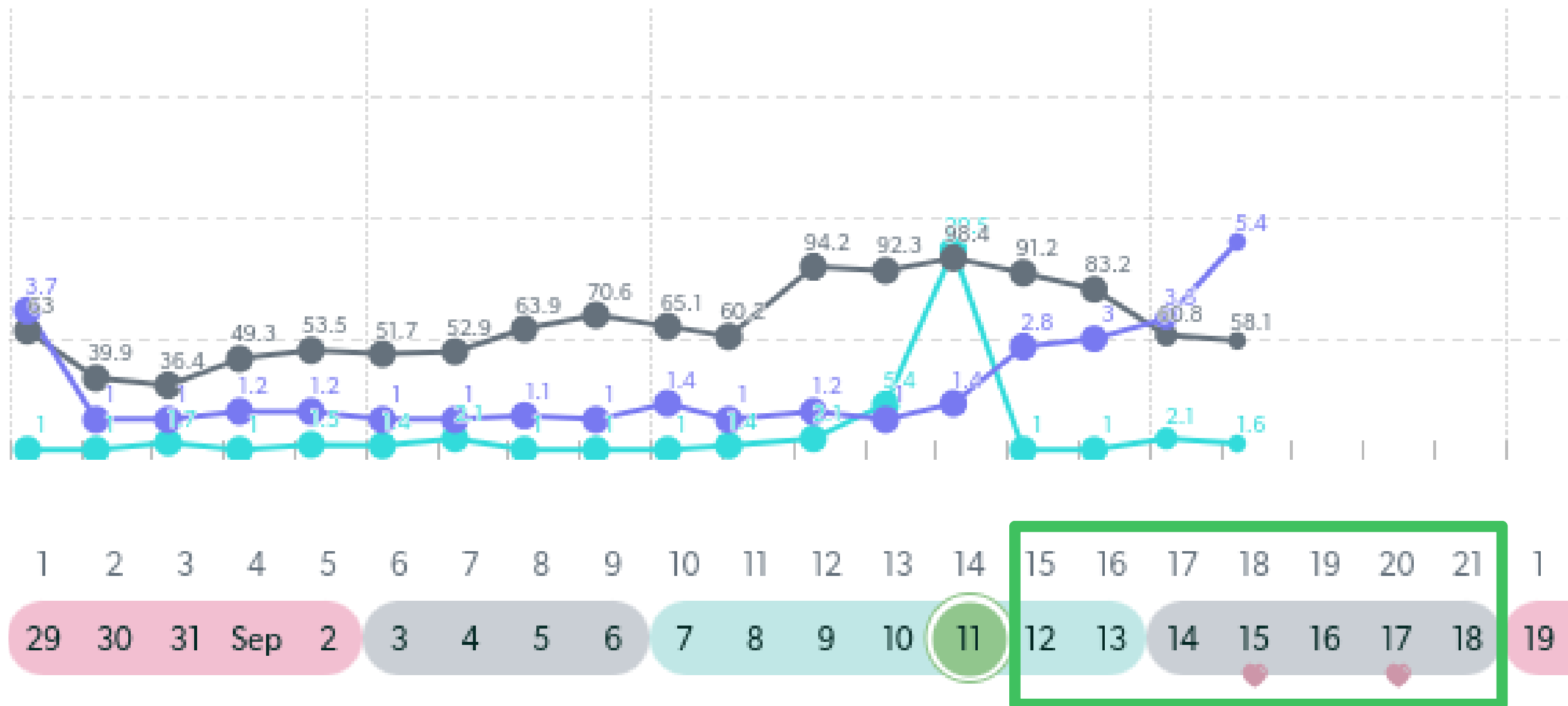
Luteal phase defect: Low progesterone



Highest progesterone is 8 = low progesterone



Luteal phase defect: Short luteal phase and low progesterone

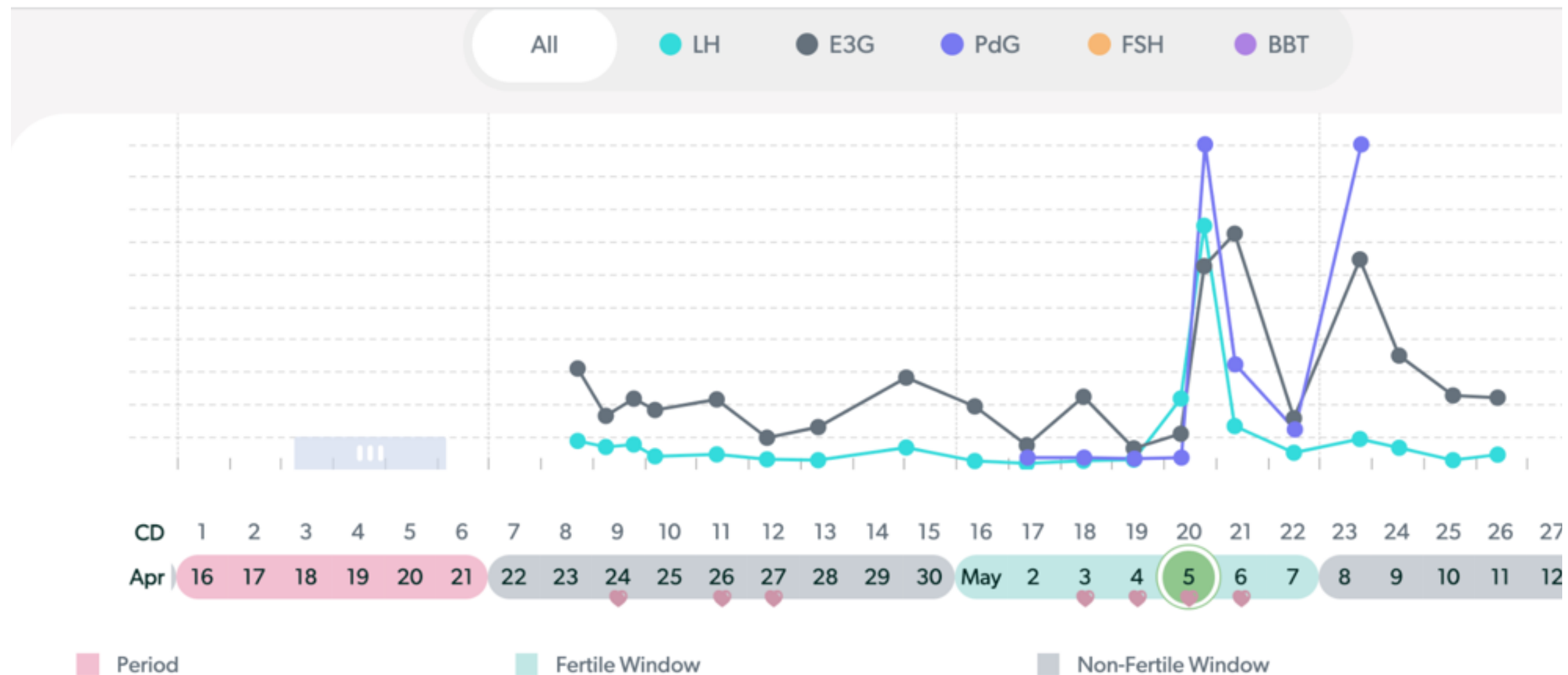


Luteal phase is 7 days= short luteal phase



Case Review: Luteal Phase Insufficiency

Luteal phase insufficiency was diagnosed in the clinic utilizing all the diagnostic tools required



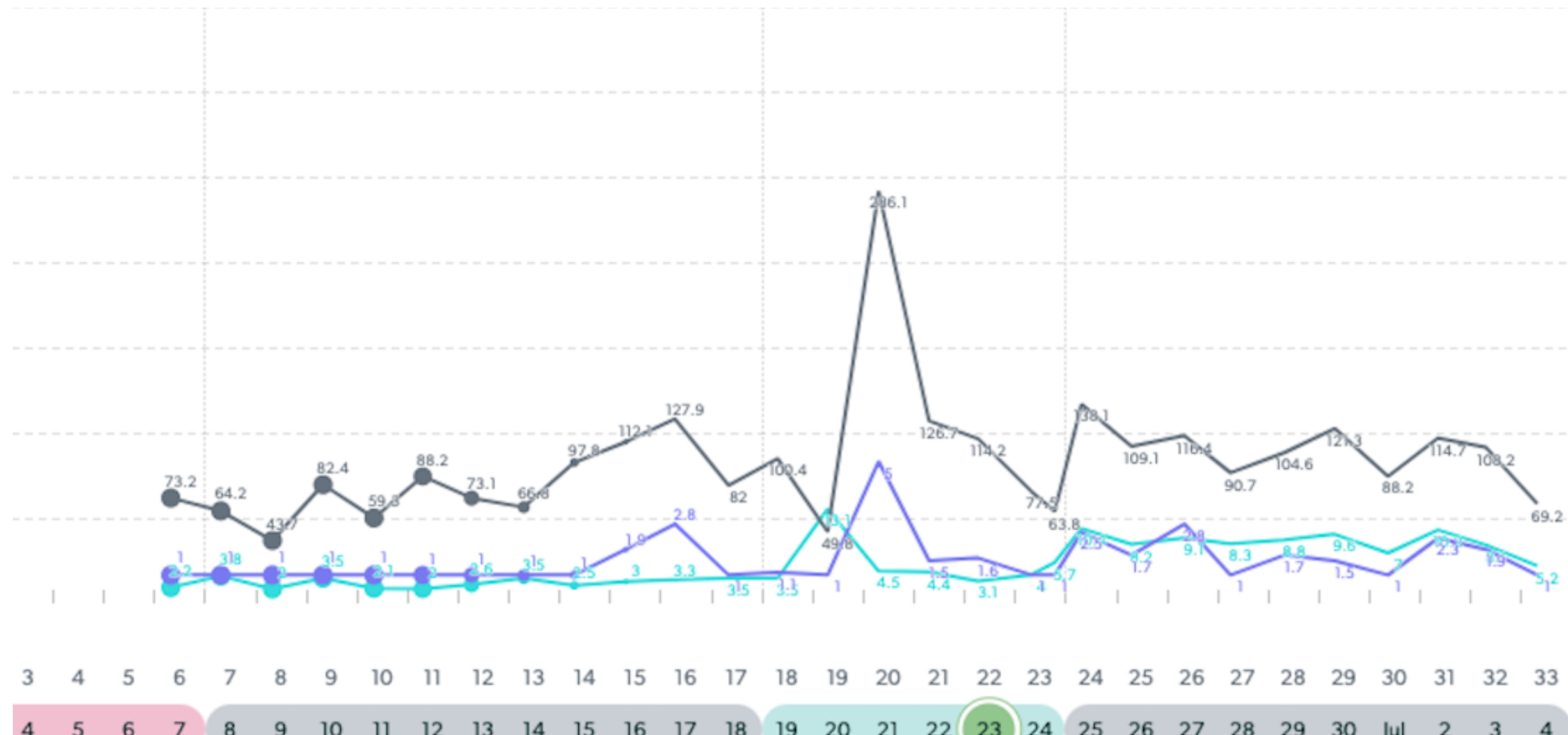
Mira data discovered:

- LH surge on CD 20 (May 5th)
- Luteal phase is 9 days
- Cycle length is 29 days



Mira assisting in clinical evaluation

Clinical differentials: LUF, luteal phase insufficiency (low progesterone) or anovulation



Mira data discovered:

- LH surge detected
- Minimal PdG rise after LH surge
- Abnormal LH pattern during luteal phase

